



# STARK

STRONGLY CHOSEN

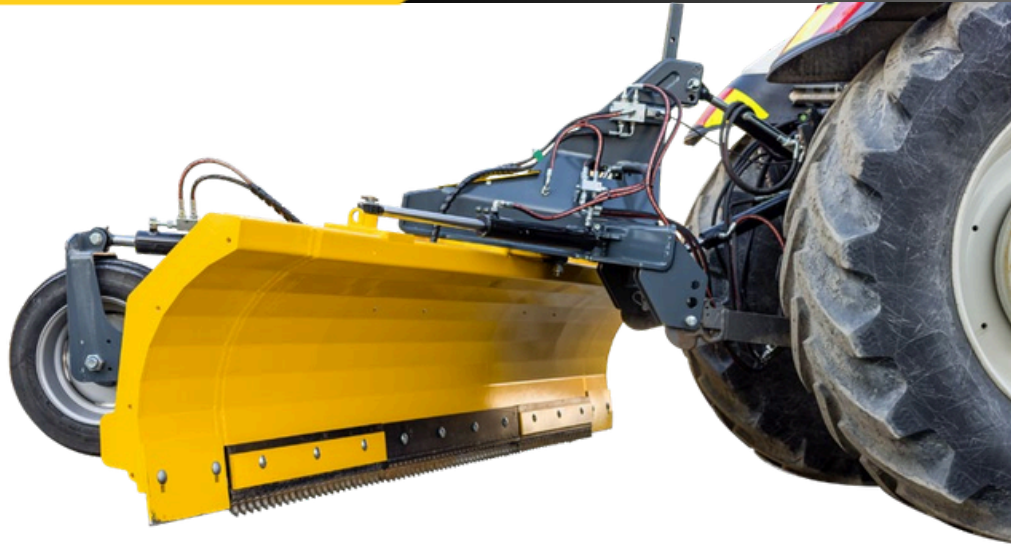
SINCE 1980

## STARK BG GRADER BLADE



## LEVELING

- A heavy-duty grader blade for removal of hard-packed snow in the winter and road maintenance in the summer.
- Wing turning system with two hydraulic cylinders for wing support and smooth grader blade use.
- Pressure relief valve and pressure accumulator, both as standard, protect the driver, machine and machinery in a collision.
- With the GRADER PRESS system, you can shift the weight of the tractor to the blade and adjust the blade. This helps the grader blade to efficiently cut into the road surface.
- The hydraulic push arm enhances efficiency and speeds up operations.
- Hydraulics require at least 3 double-acting blocks.
- The pressure system requires a tank line.
- Support wheels, adjusted separately, help shape the road and prevent the blade from excessively biting into the road.
- Throwing vanes increase snow throwing capacity and help make a straight cut at the road bank.
- Option to increase working width with bolt-on blade extensions (2x 300 mm).
- Pin blades improve grader blade bite, especially in the summer.

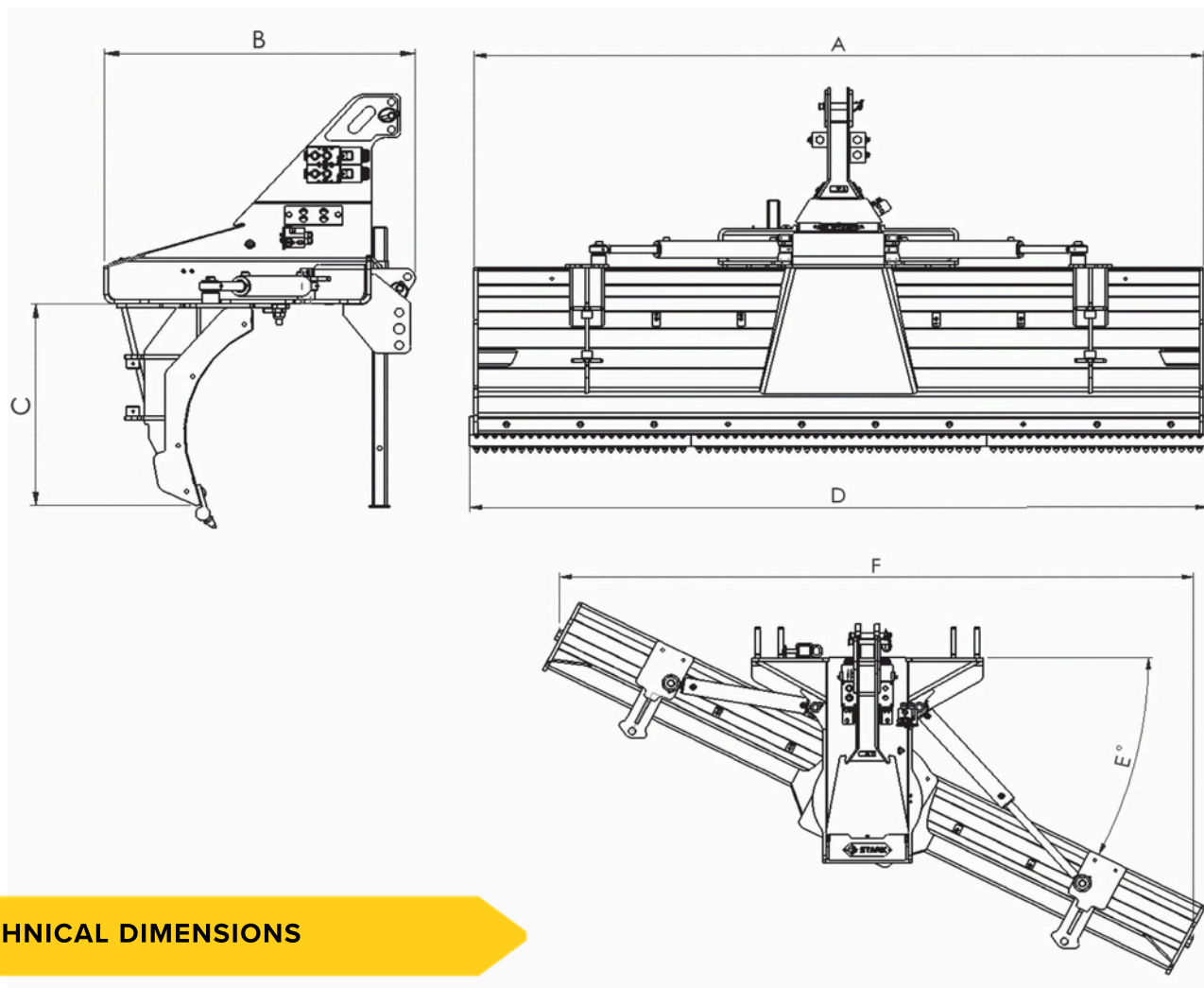


STARK  
OF FINLAND

# STARK

[www.stark.fi](http://www.stark.fi)  
STARK / Lametal Oy

**TECHNICAL DRAWINGS**



**TECHNICAL DIMENSIONS**

Product	Wing width (mm)	Length (mm)	Wing height (mm)	Working width (mm)	Swivel angle	Min. working width (mm)	Weight (kg) *
	A	B	C	D	E	F	
<b>BG 3050</b>	3015	1080	740	3050	28	2720	900

\* Weight includes blades and fittings. Weight depends on the fitting / plow accessories.